

Rock-Ola Retrofit Installation Guide

This Kit contains:

1 x



1 x



1 x



Display Installation

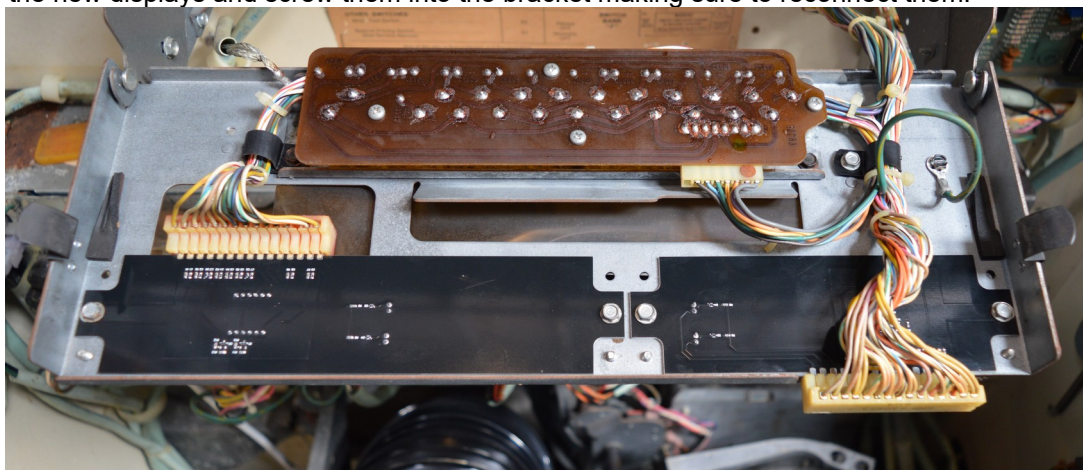
Fold-down the display panel to expose the back of each of the display boards.



Unplug the old displays and unscrew to remove both from the bracket.

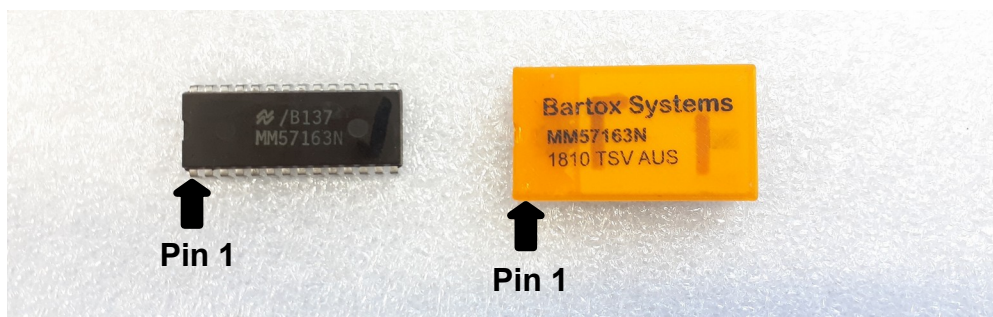


Position the new displays and screw them into the bracket making sure to reconnect them.



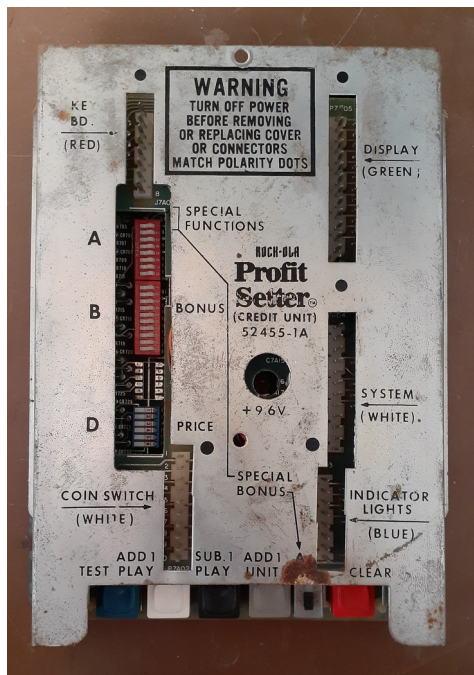
MM57163N Installation.

Please note the location of Pin 1.

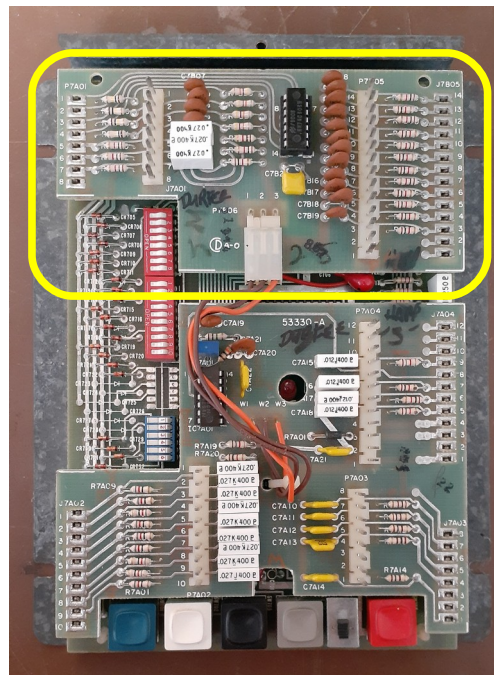


Locate the Jukebox Credit Unit. The installation method differs depending on the version of the Credit Unit installed and the model of Jukebox.

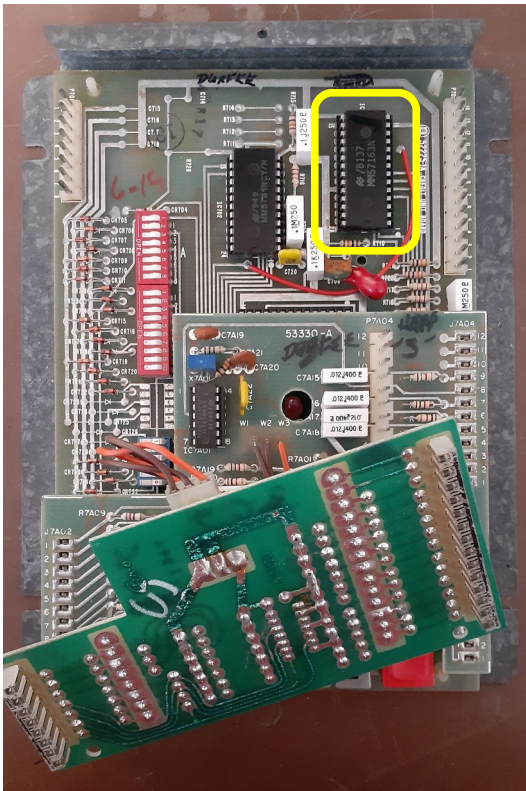
MAX 477



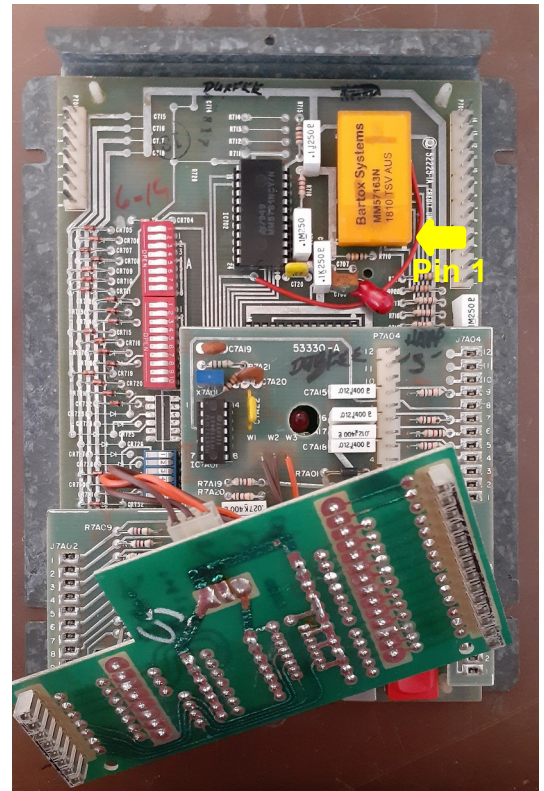
Take the Credit unit out of the Jukebox and remove the top cover.



Remove the top rider to expose the board underneath.



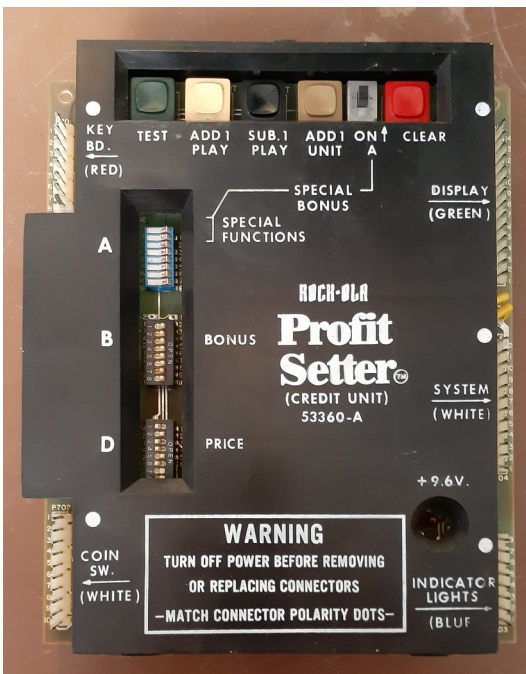
Remove the old MM57163N and install the new one.



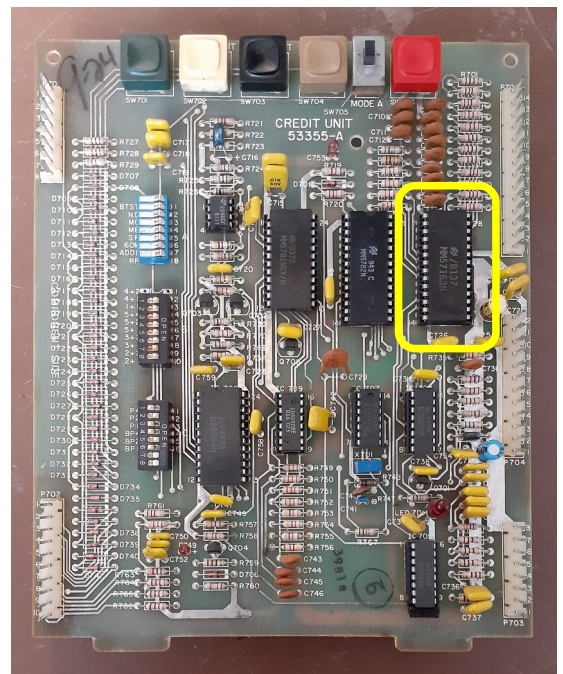
Note the orientation and location of Pin 1.

Reassemble and reinstall the credit unit into the Jukebox.

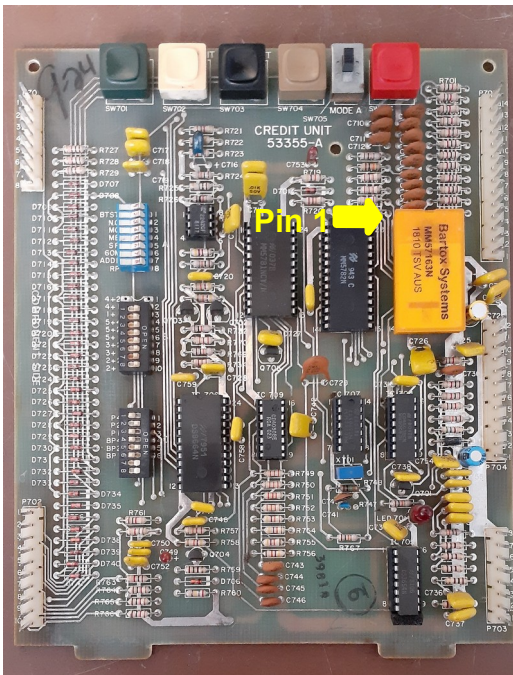
MAX 481



Take the Credit Unit out of the Jukebox and remove the top cover.



Remove the old MM57163N and install the new one.



Note the orientation and location of Pin 1.

Reassemble and reinstall the credit unit into the Jukebox.

Testing

Power on the Jukebox and make a selection.



Your Jukebox should now display credits and selections.

Troubleshooting

Symptom	Action
None of the displays operate	<ul style="list-style-type: none"> Check that the MM57163N is installed with the correct orientation. Recheck and re-seat all plug-in connectors. Make sure the display bracket is connected to Jukebox earth. Check that both display boards are connected to earth via the mounting screws securing the boards to the bracket.
One entire digit does not operate	<ul style="list-style-type: none"> Check the plug of the affected display for a bad connection. Check that the green display plug on the Credit Unit is plugged in correctly.
The same segment is missing on every number.	<ul style="list-style-type: none"> Check and re-seat the MM57163N on the Credit Unit. Check that the green display plug on the Credit Unit is correctly connected.