

Wurlitzer Telecontrol Installation Guide

This Telecontrol Kit is a direct replacement for Wurlitzer Telecontrol models 40089 and 0039074, both of which were used in the Wurlitzer i84 series jukeboxes manufactured by Deutsche Wurlitzer in Germany.

Common i84 models include the 1015 One More Time (OMT), New York, New York, Carnegie, and New Orleans jukeboxes.



This Kit Contains:

1. Telecontrol (40089 / 0039074)
2. Infra Red (IR) receiver
3. IR remote control
4. IR receiver extension cable.

Before You Begin

This guide is intended as a reference only. If you fail to follow the instructions or use common sense, and your Jukebox is damaged as a result, that is solely your responsibility! If you have any doubts, consult a professional Jukebox repair specialist for assistance.

Installation 1015 OMT

Before starting the installation, turn off the Jukebox and unplug the power cable from the wall socket.

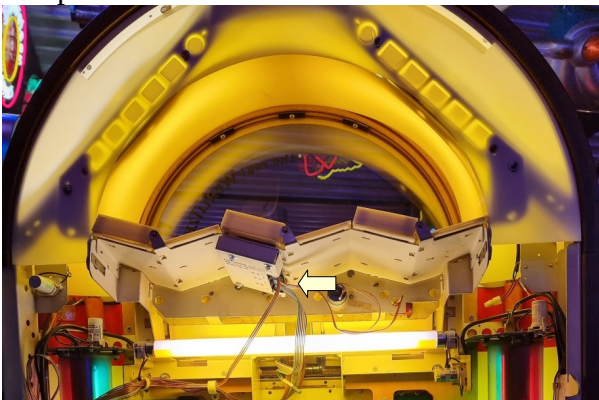
IR receiver Installation



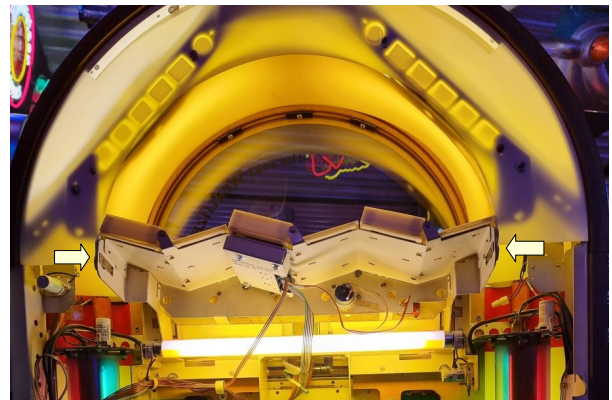
Open the front door of the jukebox.
Press the metal buttons indicated to release the title panel



Hinge down the title panel and remove it from the jukebox.

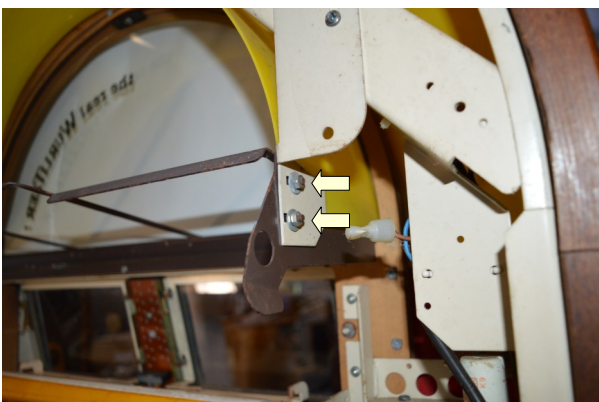


If the receiver is being installed in a 1015 CD
unplug the title rack cables.



Press the metal buttons where indicated to first
release the title panel and remove it from the
Jukebox .

Before removing the inner window plastic, be aware that it may have become brittle over time. Movement could cause it to crack or break, so handle it with care.



Loosen but **do not remove** the nuts on both sides of the title rack bracket.





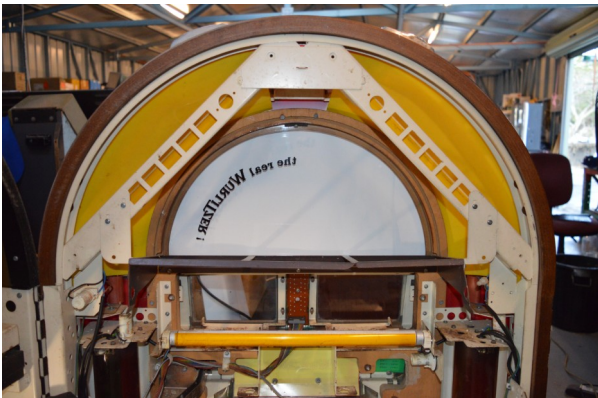
Get the side of the inner window plastic and lift in the direction indicated.



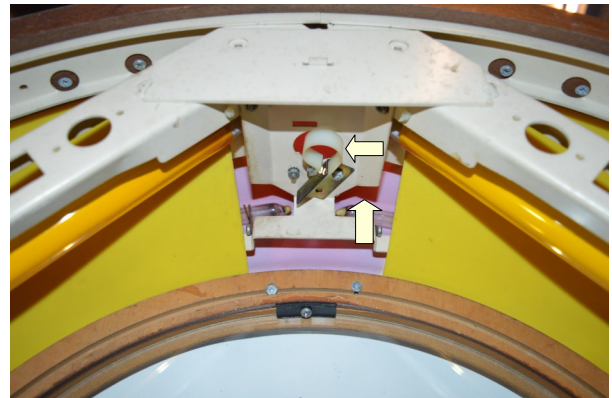
Bend the plastic toward the middle of the title holder mounting bracket.



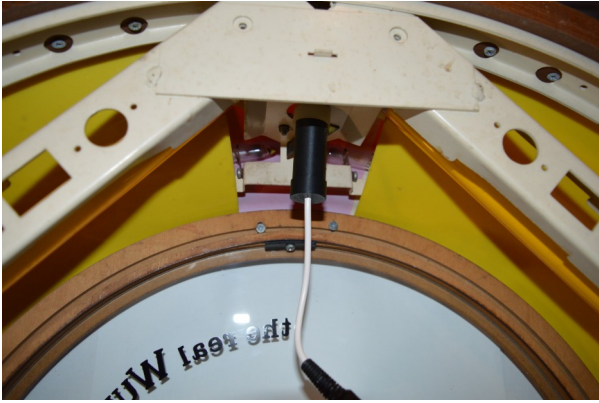
Lift the other side of the inner window plastic where indicated and remove the entire inner window plastic from the door.



(Inner window plastic removed)



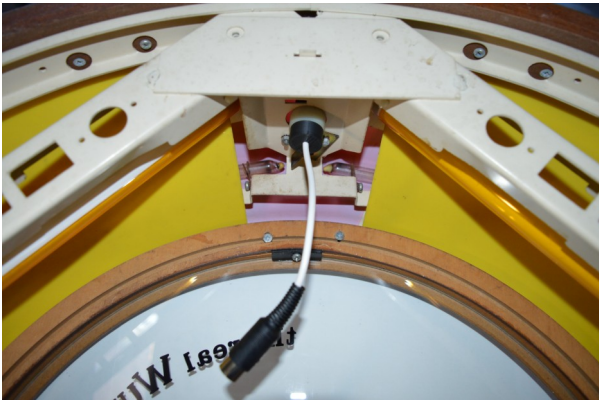
Visually inspect the P-Clip on the IR mounting bracket. If it is broken it will need to be replaced before continuing. Refer to [Replacing the P-Clip](#) section below.



Get the IR receiver and push it partially into the P-Clip of the IR mounting bracket



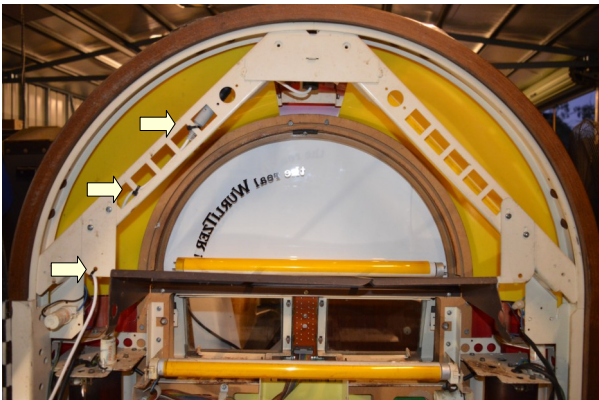
Holding the IR receiver at a slight angle push it in the rest of way. If it will not go in slightly adjust the insertion angle.



If it still won't go in slightly loosen the P-Clip holding nut on the IR mounting bracket. It should be installed as shown.

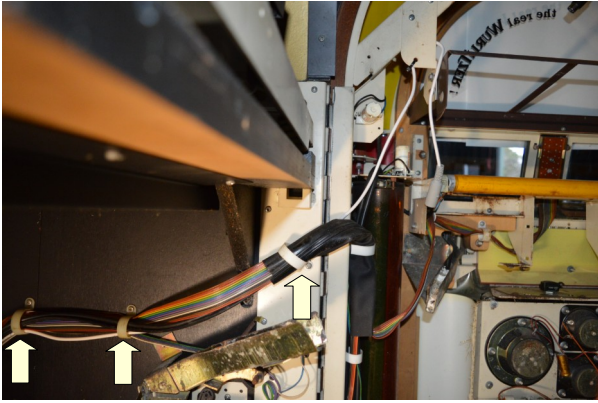


Get the socket end of the receiver extension lead and plug it into the IR receiver plug.

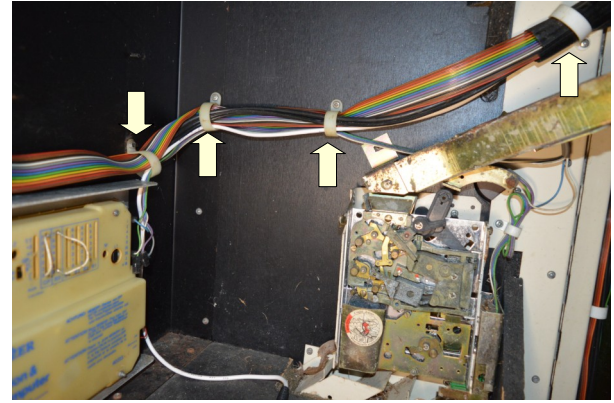


Remove the left fluorescent tube and cable tie the receiver extension cable onto the door frame. Make sure that the cable does not obstruct the fluorescent tube.





Feed the IR receiver cable into the harness using the cable clamps. Run it as far as the Selection and Credit Computer



Telecontrol Installation

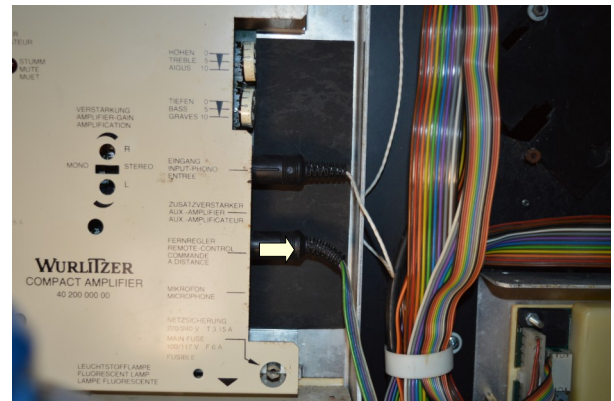
The most common location for mounting the Telecontrol is in front of the Selection and Credit Computer (S&CC). Some later 1015's have speaker transformers fitted in this location and some earlier CD versions have the CD decoder unit fitted here.

If there is anything fitted in front of the Selection and Credit Computer jump to the **Alternate Installation** section.

Standard Installation



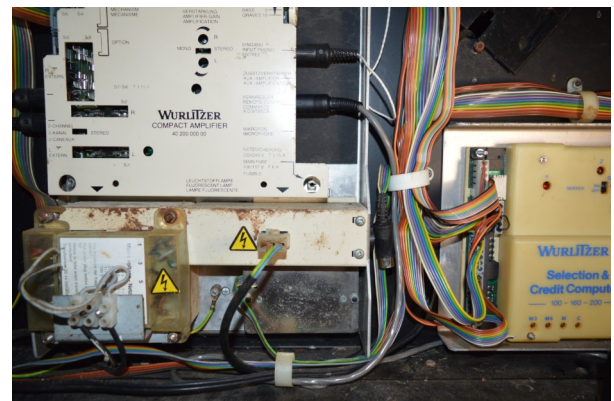
Plug the IR receiver cable into the Telecontrol unit.



Unplug the wired volume control from the amplifier. Tuck the plug into the wiring loom.



Run the grey cable from the Telecontrol and plug in it to the Remote Control socket of the amplifier. Bundle up any excess wire and place in the wiring loom.



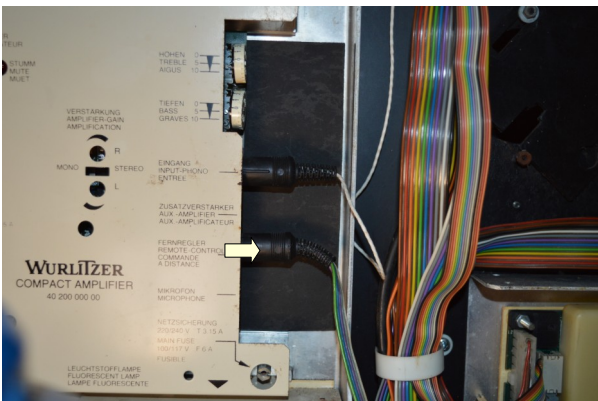


Secure the Telecontrol with 46x12mm timber screws or similar.

Alternate Installation



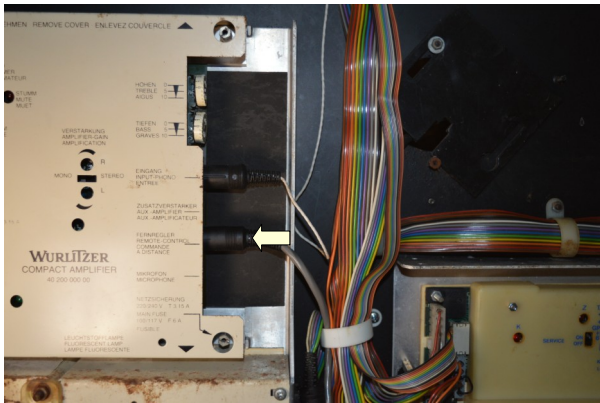
With the wiring done as previously shown, secure the Telecontrol to the right hand side wall of the jukebox with 46x12mm timber screws or similar. Plug the IR receiver extension cable into the Telecontrol.



Unplug the wired volume control cable and neatly tuck it into the wiring loom using an available cable clamp



Run the grey cable in the wiring loom from the Telecontrol to the amplifier.

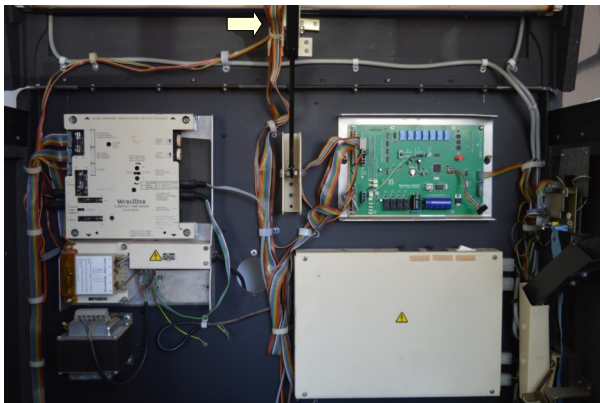


Plug the Telecontrol cable into the Remote Control socket of the amplifier. Bundle up any excess cable and neatly place it into the wiring loom.

Installation for Carnegie (CD)

Before starting the installation, turn off the Jukebox and unplug the power cable from the wall socket.

IR receiver Installation



Open the front door of the jukebox and locate of the Infra Red receiver window.



It is located in the top middle of the front door of the Jukebox.



Check if the P-clip attached to the IR mounting bracket is broken. If it is broken it needs to be replaced. Refer to **Replacing the P-Clip** section of this document before continuing.



The IR receiver will be installed here



Get the receiver and push it a little way into the P-Clip of the IR mounting bracket.



Line up the IR receiver with the hole in the door and push it in the rest of the way. Note that the receiver may need to be pushed in on a slight angle.



The installed IR receiver.

Telecontrol Installation

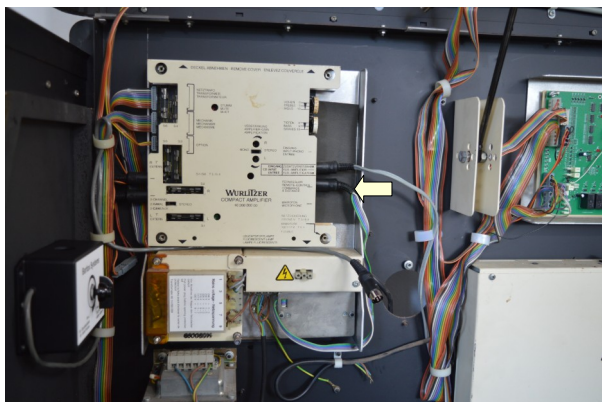
Install the Telecontrol in a suitable location, typically on the left wall of the jukebox cabinet. Ensure it is positioned so that it does not interfere with the title assembly when the door is shut. Before securing it, use an adhesive putty such as Blu-Tack or UHU to test the mounting location and confirm proper placement.



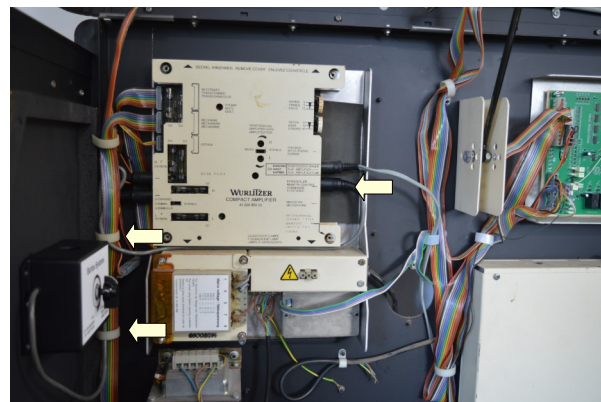
Screw the Telecontrol to the left wall of the cabinet using 46x12mm timber screws or equivalent.



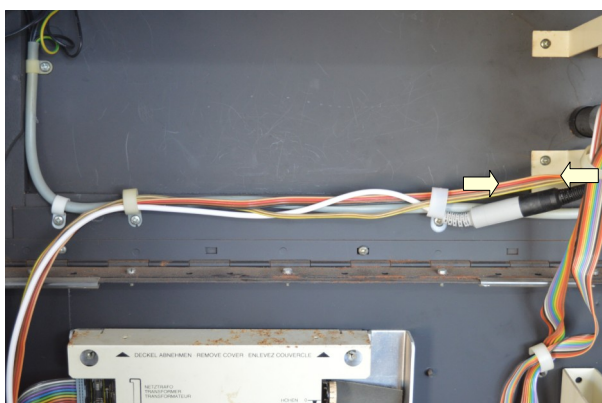
Run the grey cable from the Telecontrol to the amplifier using the cable clamps to neatly secure the excess cable.



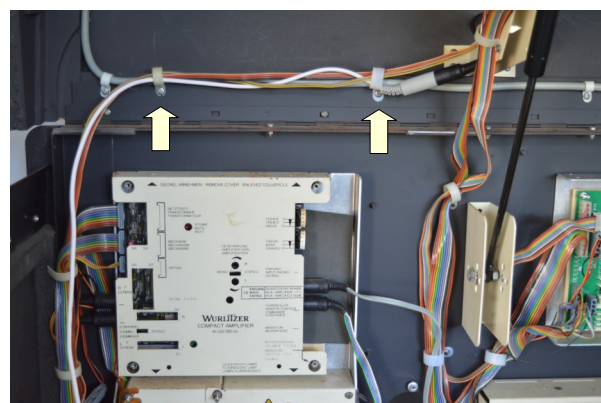
Unplug the wired volume control and neatly tuck it into the wiring loom.



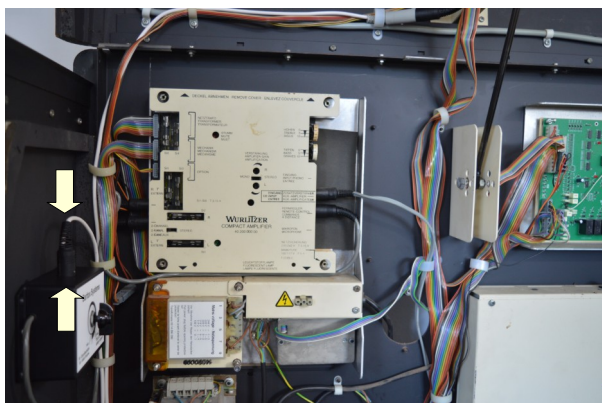
Plug the Telecontrol cable into the Remote Control socket of the amplifier. Bundle any excess cable into the wiring loom.



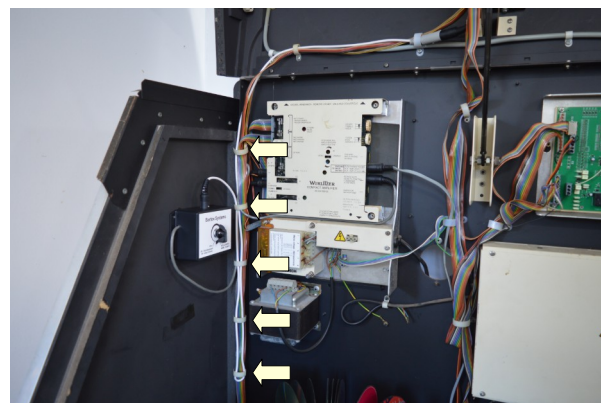
Get the socket end of the IR receiver extension lead and plug it into the IR receiver plug.



Run the IR receiver cable with the harness securing it with the cable clamps to the door.



Plug the IR receiver extension cable into the top of the Telecontrol.



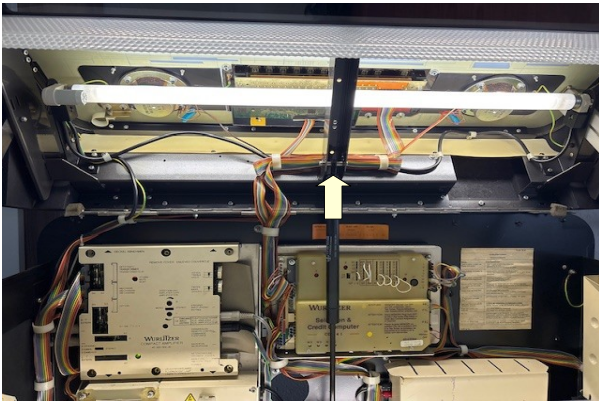
Run the remaining IR receiver cable with the harness using the cable clamps indicated to secure the excess cable.

New Orleans CD (I)

The installation procedure for the New Orleans differs from most other Jukebox models. The Telecontrol is mounted on a metal bracket located at the top of the front door. A separate section in this guide provides specific instructions for installing the New Orleans CD II model.

IR receiver Installation

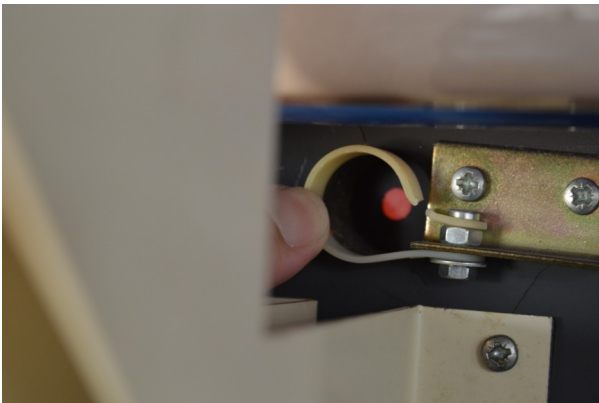
Turn off the Jukebox and unplug the power cable from the wall socket.



Open the front door of the jukebox and locate the IR Receiver.



It is located in the middle of the top door of the Jukebox.



Check if the P-clip attached to the IR mounting bracket is broken. If it is broken it needs to be replaced. Refer to the **Replacing the P-Clip** section of this document before continuing.

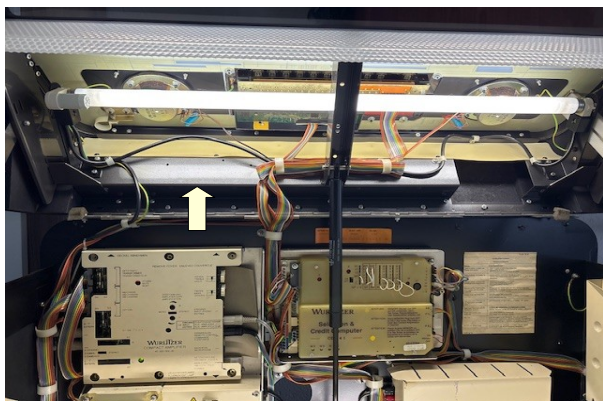


Get the IR Receiver and push it a little way into the P-Clip of the IR mounting bracket (Carnegie is shown here for clarity purposes)

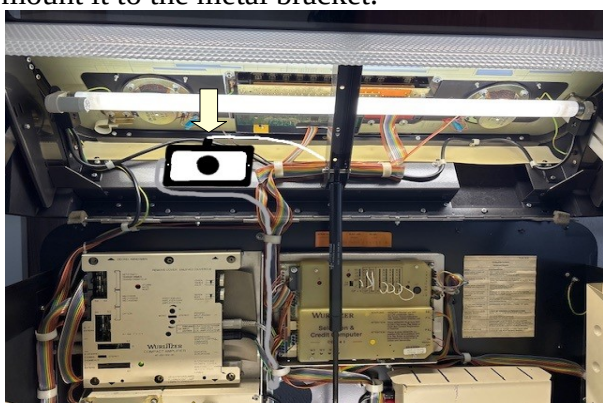


Line up the IR receiver with the hole in the door and push it in the rest of the way. Note that the receiver may need to be pushed in on a slight angle.

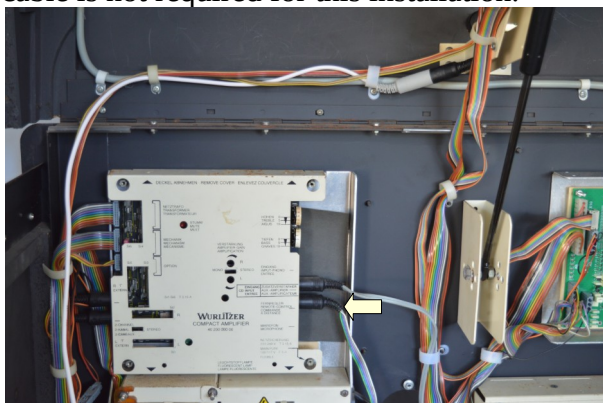
Telecontrol Installation



With the IR receiver fitted, install the Telecontrol using M4 screws to mount it to the metal bracket.



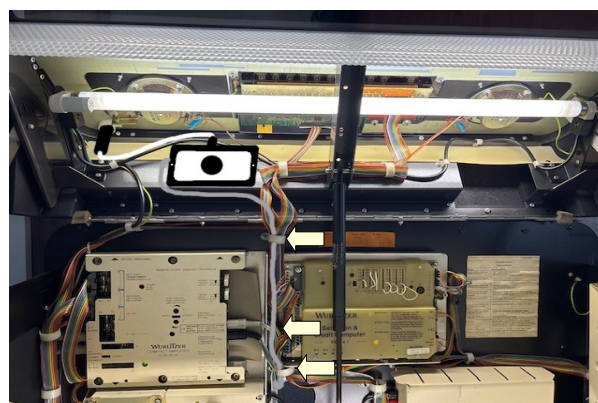
Connect the IR Receiver cable to the socket at the top of the Telecontrol. The receiver cable is not required for this installation.



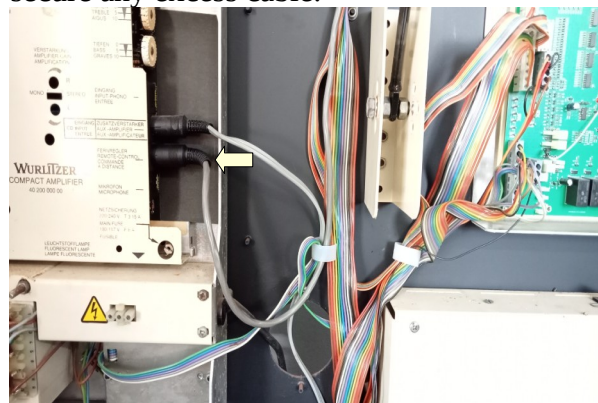
Unplug the wired volume control and neatly tuck it into the wiring loom



Use the middle mounting holes as indicated.



Run the grey Telecontrol cable to the amplifier using the cable clamps to neatly secure any excess cable.



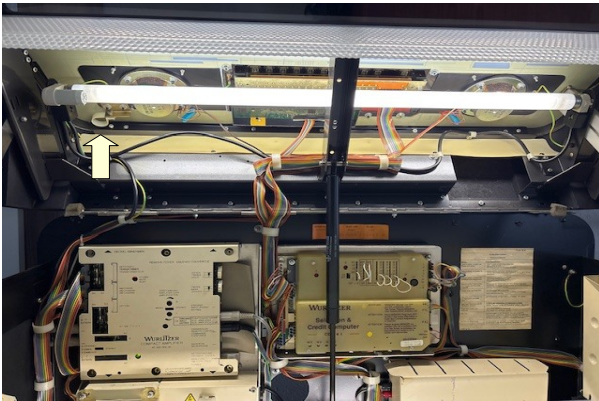
Plug the Telecontrol cable into the Remote Control socket of the amplifier. Bundle any excess cable into the harness.

New Orleans CD II

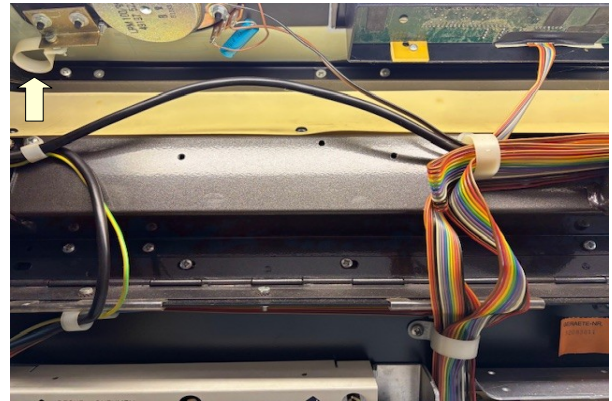
The Installation for the New Orleans CD II differs from the New Orleans CD (I) and most other models. The Telecontrol is installed on a metal bracket mounted in the top of the front door of the jukebox. The IR receiver is mounted nearby and points out the front of the jukebox.

IR receiver Installation

Turn off the Jukebox and unplug the power cable from the wall socket.



Open the front door of the jukebox and locate the IR Receiver P-Clip.



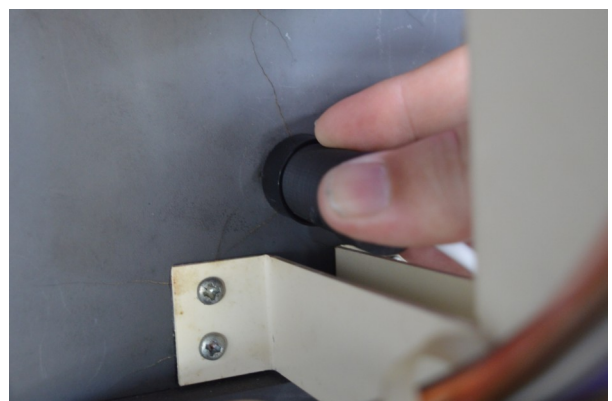
It is located in the top left part of the door above the left tweeter.



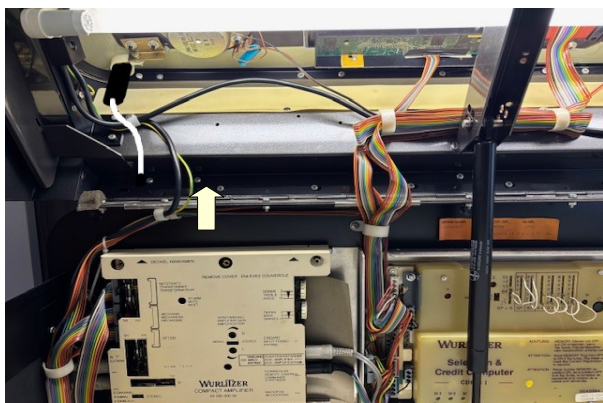
Check if the P-clip attached to the IR mounting bracket is broken. If it is broken it needs to be replaced. Refer to the **Replacing the P-Clip** section of this document before continuing. (Carnegie is shown for clarity purposes)



Get the IR Receiver and push it in until the front of the receiver presses up against the glass. (Carnegie is shown for clarity purposes)



Make sure that the receiver stays in position when the jukebox door is shut.



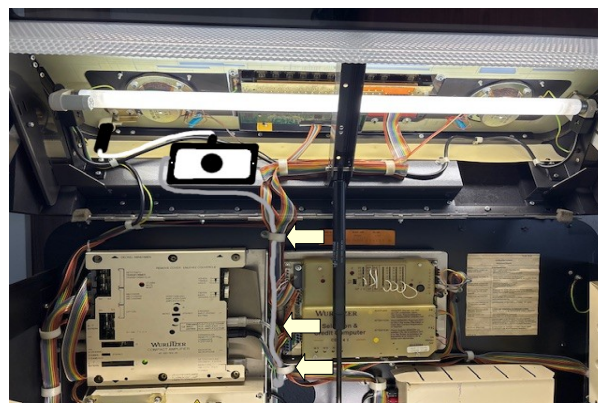
With the IR receiver fitted, install the Telecontrol using M4 screws to mount it to the metal bracket.



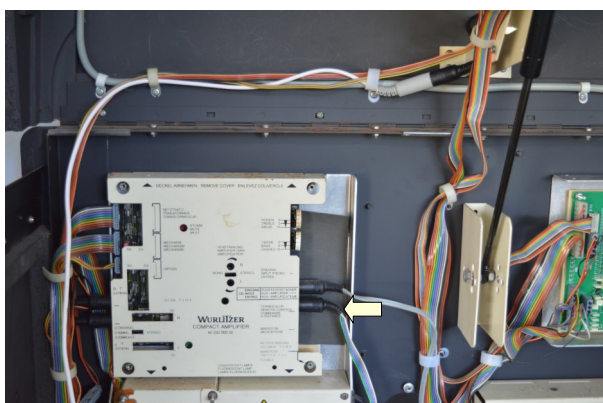
Use the middle mounting holes as indicated.



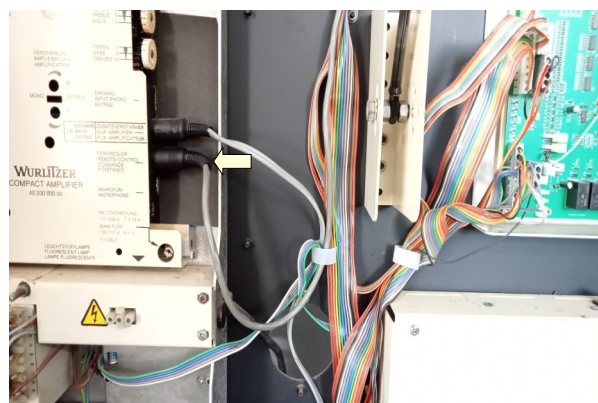
Connect the IR receiver cable to the socket at the top of the Telecontrol. The receiver extension cable is not required for this installation.



Run the grey Telecontrol cable to the amplifier using the cable clamps to neatly secure any excess cable.



Unplug the wired volume control and neatly tuck it into the wiring loom



Plug the Telecontrol cable into the Remote Control socket of the amplifier. Bundle any excess cable into the harness.

Setting the Initial Volume

The Initial Volume adjustment ensures the jukebox starts at a predetermined volume level upon power-up, regardless of its previous volume setting.

By default, this setting is at the mid position, meaning the volume is set to half when the jukebox is first turned on. You can adjust this setting to suit your needs.

For changes to take effect, the jukebox must be power cycled. Always wait at least 30 seconds between turning it off and back on to prevent potential damage.

Replacing the P-Clip

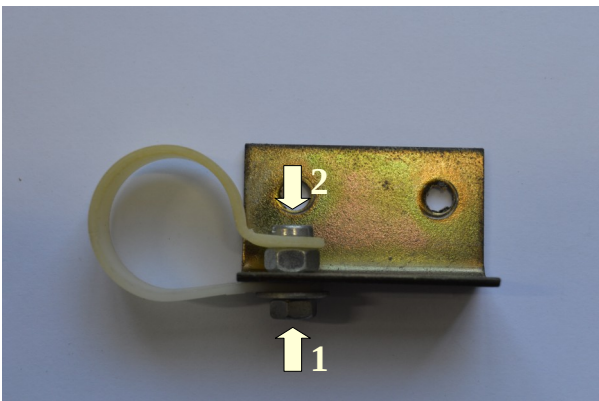
The P-Clip that holds the IR receiver must be in good condition to ensure proper signal reception. A broken clip and incorrectly mounted receiver can lead to reception issues. Over time these clips can weaken due to age and environmental factors. This section provides instructions for replacing a broken P-Clip to maintain optimal IR receiver performance.



Remove the screws that secure the bracket to the cabinet.



Remove the bracket. A flat head screw driver might be needed to pry the bracket from the door if it does not come freely.



Remove the nut (1) with a 7mm nut driver or spanner while holding the screw (2) in place with a screw driver. Remove and discard the broken P-Clip.



Install the replacement P-Clip and re assemble the assembly in the order shown. Note that the replacement P-Clip is bigger.

Insert the M4 screw with M5 spacer nut (1) through the top part for the P-Clip (2) into the bracket (3) making sure that everything is aligned as shown. Position the M4 nut and washer as shown at (4) and tighten the M4 nut to secure the new P-Clip to the mounting bracket.

Reinstall the P-Clip and bracket back into the Jukebox.

Troubleshooting

Volume is loud and cannot be turned down with the remote control.	<ul style="list-style-type: none"> Point the remote control directly above the jukebox so that the IR signal bounces into the IR receiver (For New Orleans CD II point the remote control directly at the Jukebox). Check that the Telecontrol grey lead is plugged into the amplifiers “Remote Control” Socket. Make sure that IR receiver cable / extension cable is connected correctly to the Telecontrol. Check the 9V battery in the Remote Control. Some i84 amplifiers experience corrosion on the remote control socket, which can affect functionality. To test for this issue, firmly press on the grey Telecontrol plug while it is inserted into the remote control socket. If the volume changes upon touch or movement without using the remote control, clean the socket with a high-quality lubricating contact cleaner. If cleaning does not resolve the issue, there may be bad solder joints on the amplifier’s circuit board that require further inspection and repair.
The remote control has limited range.	<ul style="list-style-type: none"> Check the 9V battery of the Remote Control. Make sure that the Jukebox IR Receiver window is clear of dirt and foreign material. Check for a broken IR mount P-Clip. Try aiming the remote to the roof above the Jukebox as most Wurlitzer i84 jukeboxes have the receiver mounted facing up. For New Orleans CD II point the remote control directly at the Jukebox.
The volume control on the back of the jukebox does not work.	<ul style="list-style-type: none"> Once the Telecontrol and IR Receiver are installed the Jukebox volume can only be controlled with the remote control.
An original Siemens or RUF IR Receiver was used instead of the one supplied in the kit and the remote control has limited range or doesn’t work correctly.	<ul style="list-style-type: none"> While both receivers are supported via a jumper setting in the Telecontrol, it is recommended to use the new receiver included in the kit. Many original receivers develop age related issues over time and often require repair or replacement.